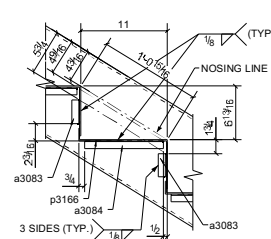
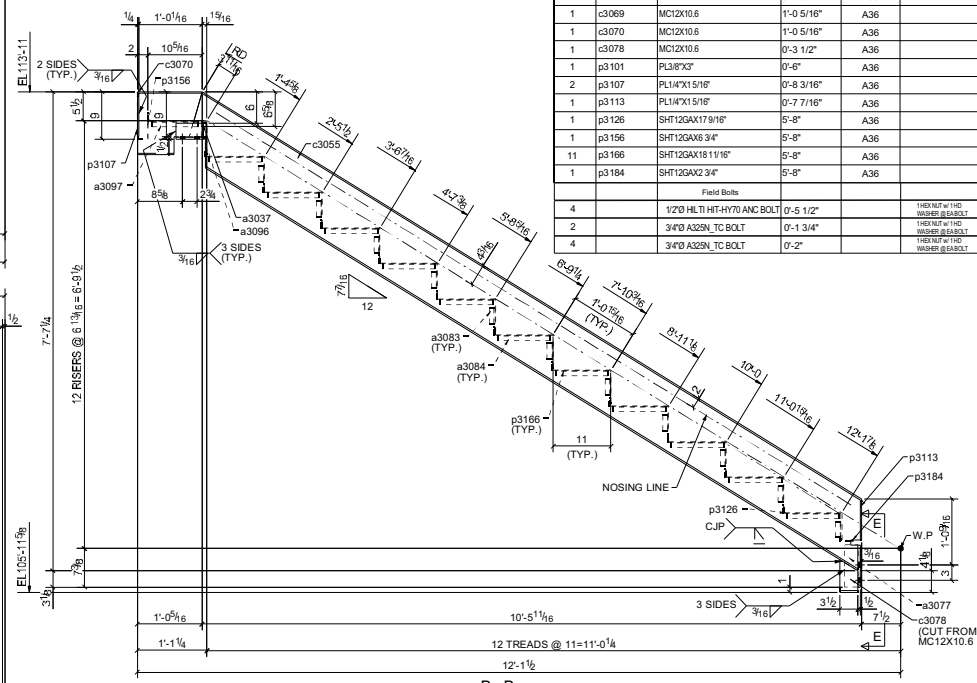
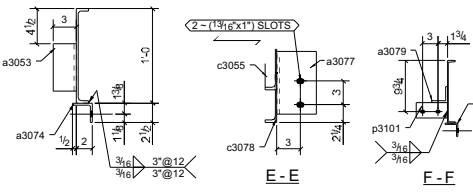


ONE - STRINGER - 3011ST1



BILL OF MATERIAL

QTY.	MARK	DESCRIPTION	LENGTH	GRADE	REMARKS
1	3011ST1	STRINGER			
1	3011ST1	MC12X10.6	13'-2 9/16"	A36	
2	a3037	L3X3X3/8	0'-5 1/4"	A36	
1	a3053	L3X3X5/16	0'-6"	A36	
1	a3074	L2-1/2X2-1/2X1/4	5'-4 1/16"	A36	
1	a3077	L5X3X3/8	0'-8 1/16"	A36	
1	a3079	L3X3X5/16	5'-1"	A36	
22	a3083	L1X1X1/8	0'-3"	A36	
1	a3084	L1X1X1/8	0'-10"	A36	
2	a3096	L1X1X1/8	0'-2 1/2"	A36	
2	a3097	L1X1X1/8	0'-8 7/8"	A36	
1	c3055	MC12X10.6	12'-10 5/16"	A36	
1	c3057	MC12X10.6	5'-4 9/16"	A36	
1	c3069	MC12X10.6	1'-0 5/16"	A36	
1	c3070	MC12X10.6	1'-0 5/16"	A36	
1	c3078	MC12X10.6	0'-3 1/2"	A36	
1	p3101	PL3/8X2"	0'-6"	A36	
2	p3107	PL1/4X15/16"	0'-8 3/16"	A36	
1	p3113	PL1/4X15/16"	0'-7 7/16"	A36	
1	p3126	SHT12GAX17/916"	5'-8"	A36	
1	p3156	SHT12GAX6 3/4"	5'-8"	A36	
11	p3166	SHT12GAX18 11/16"	5'-8"	A36	
1	p3184	SHT12GAX2 3/4"	5'-8"	A36	
Field Bolts					
4		1/20 HLT.HHT-HY70 ANC BOLT	0'-5 1/2"		TYPICAL W/ HD WASHER & NUT
3		3/4" A329, TC BOLT	0'-1 3/4"		TYPICAL W/ HD WASHER & NUT
4		3/4" A329, TC BOLT	0'-2"		TYPICAL W/ HD WASHER & NUT