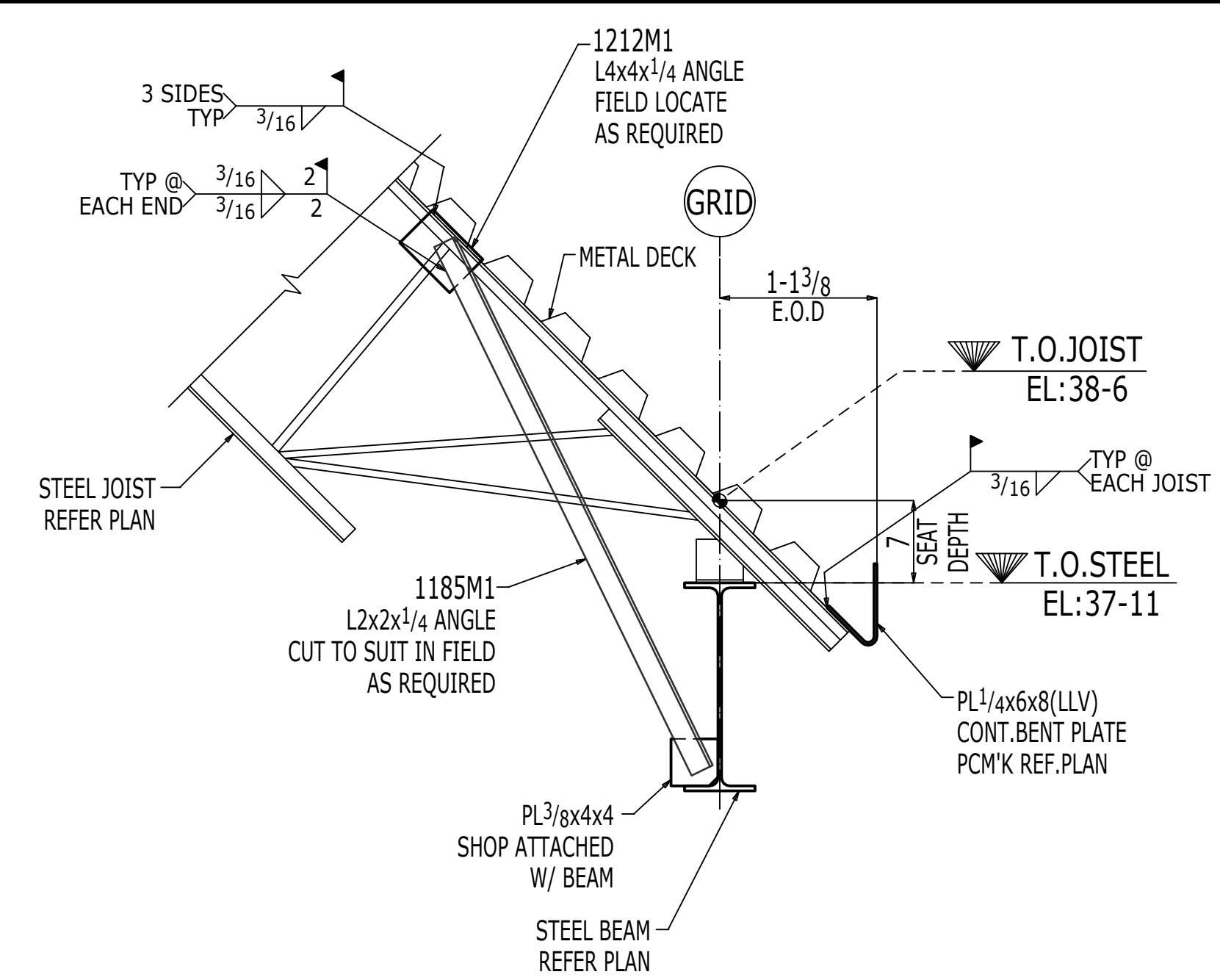
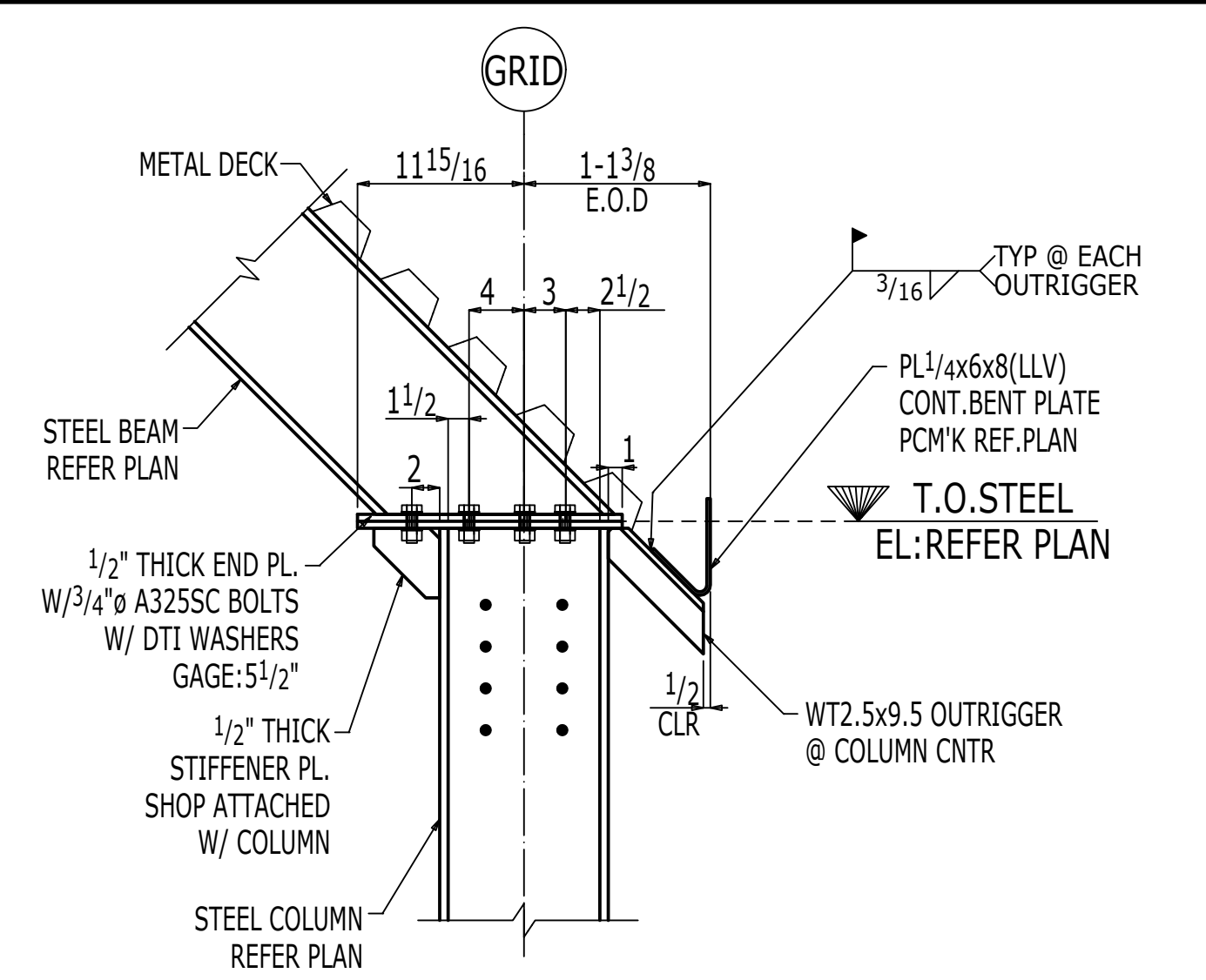


01 SECTION VIEW
E1009

ERECTOR NOTE:
REMOVE ERECTION PLATES AFTER COMPLETION OF FIELD WELD. GRIND SMOOTH WHERE EXPOSED TO VIEW FROM ANY VANTAGE POINT.

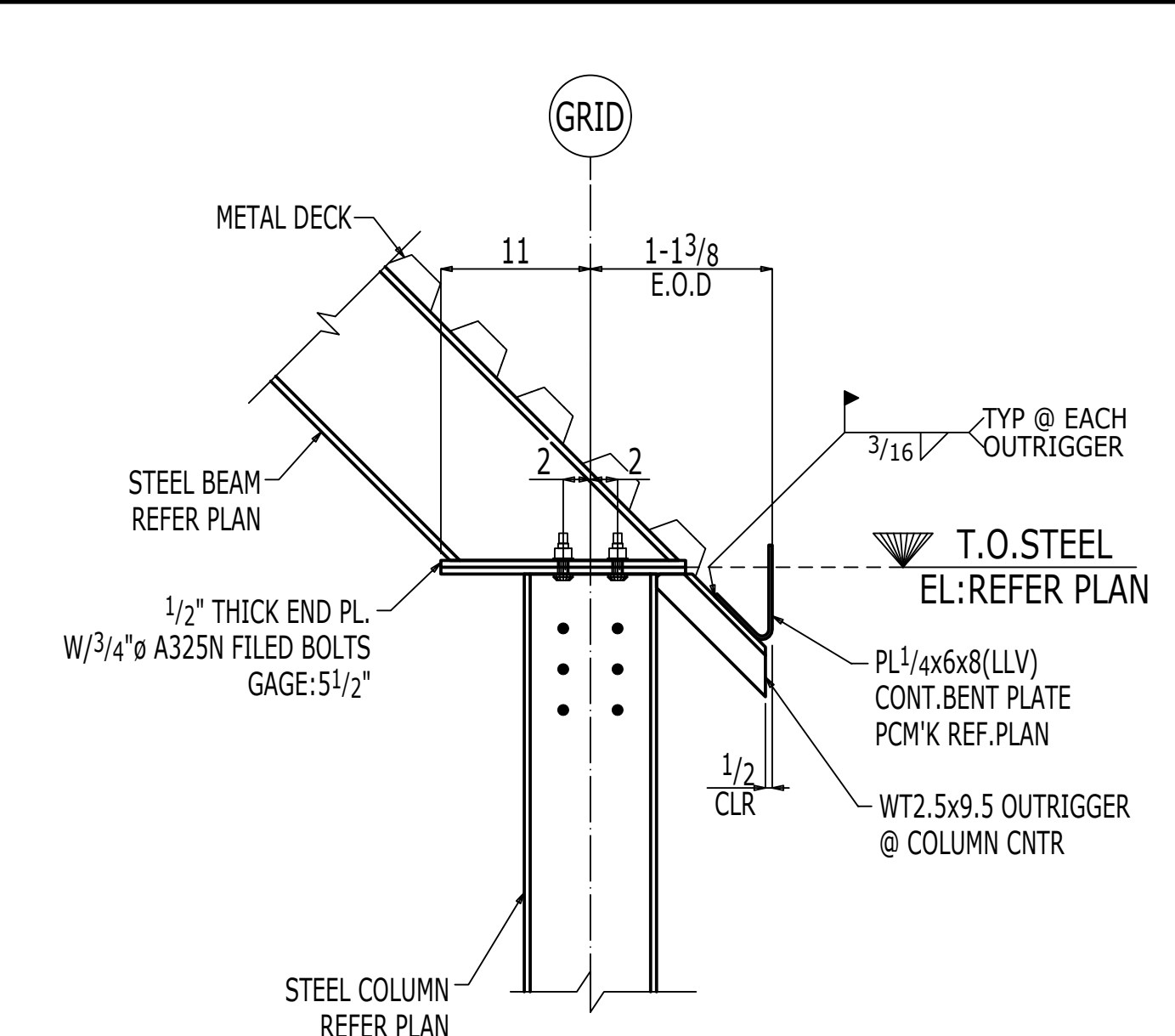


02 SECTION VIEW
E1009 (REF.DWG:A/S407)

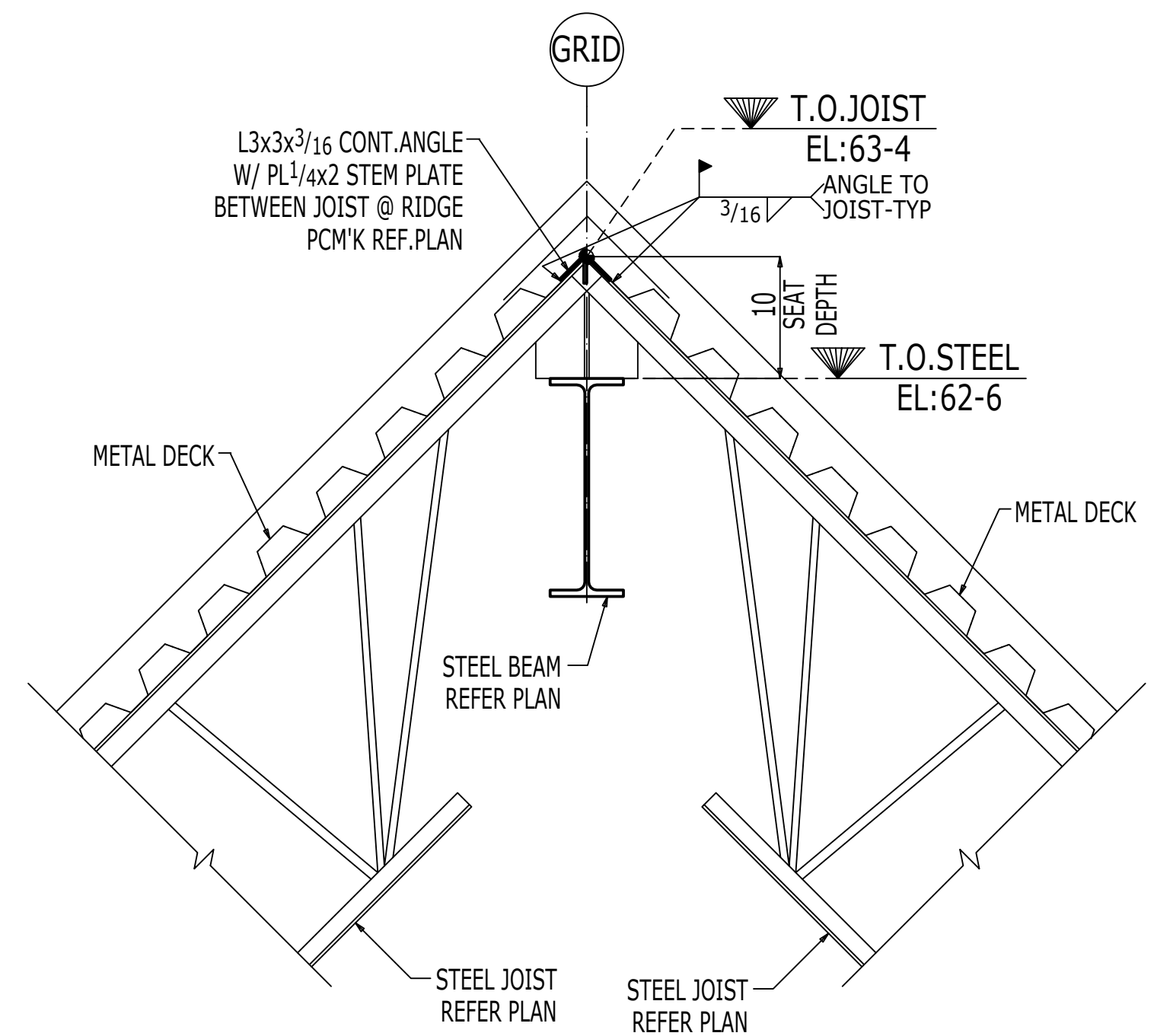


03 SECTION VIEW
E1009 (REF.DWG:B/S407)

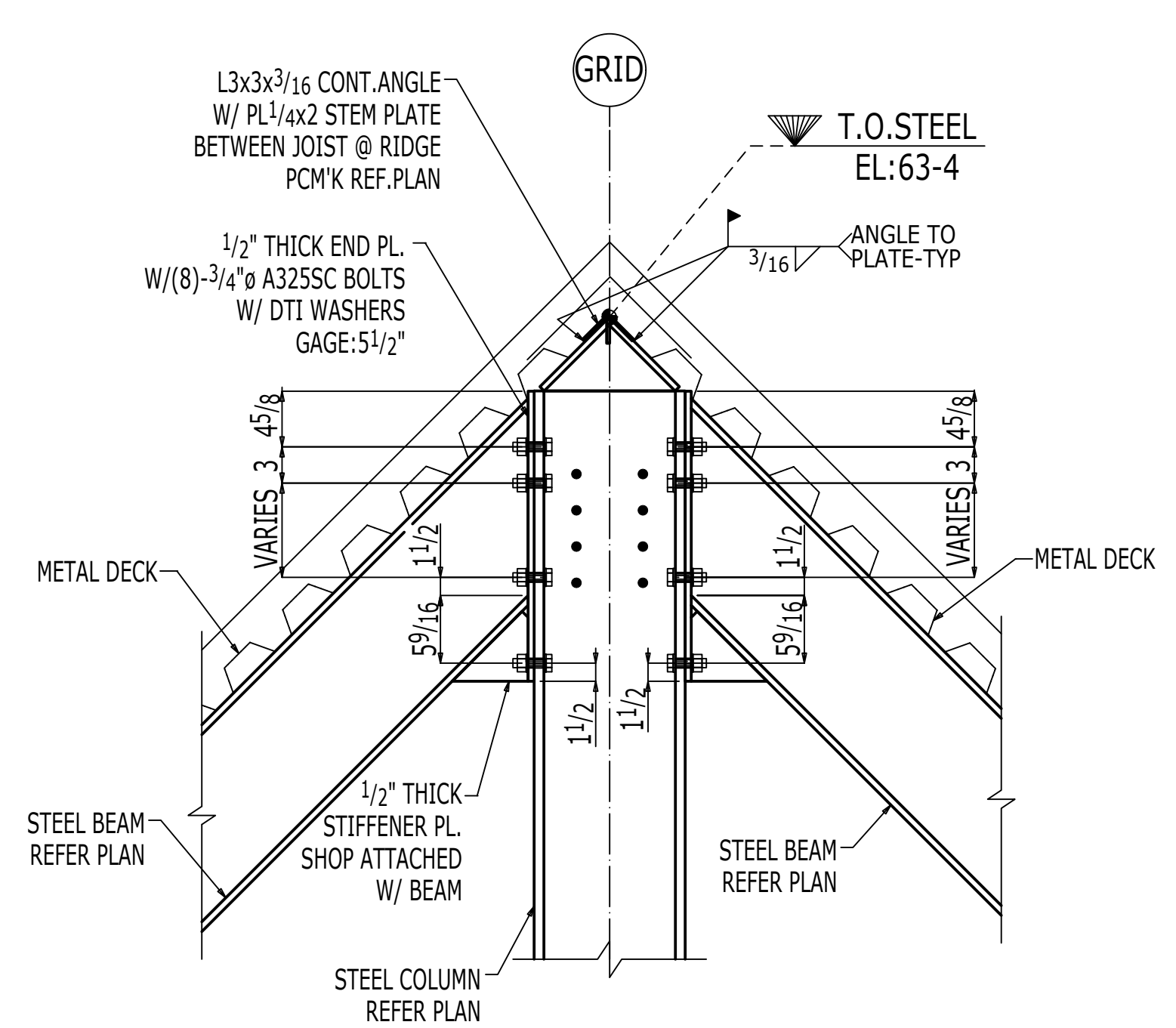
NOTE:
FOR DTI WASHER INSTALLATION DETAILS REFER 02/E1011.



04 SECTION VIEW
E1009 (REF.DWG:N/S401)

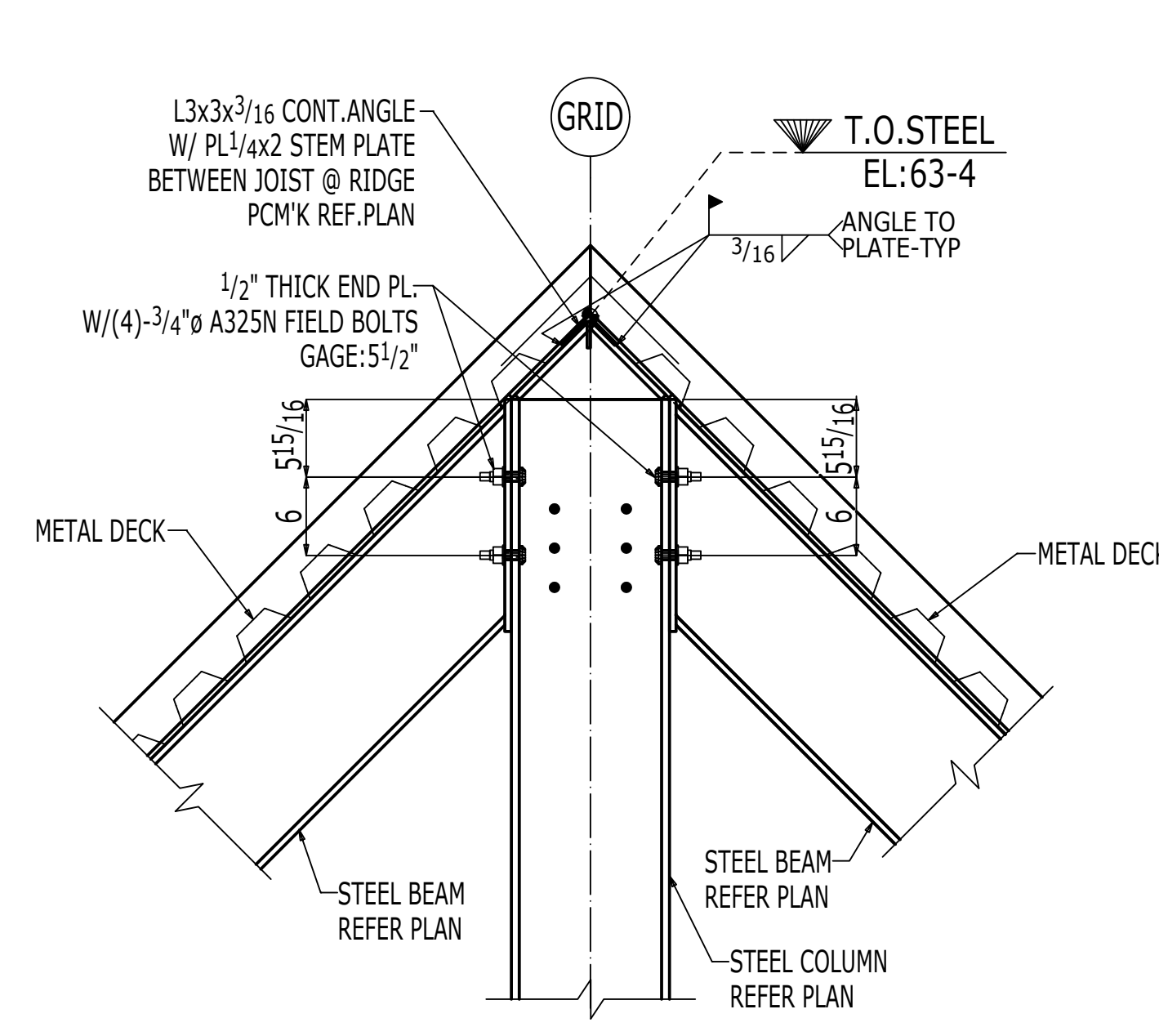


05 SECTION VIEW
E1009 (REF.DWG:C/S407)

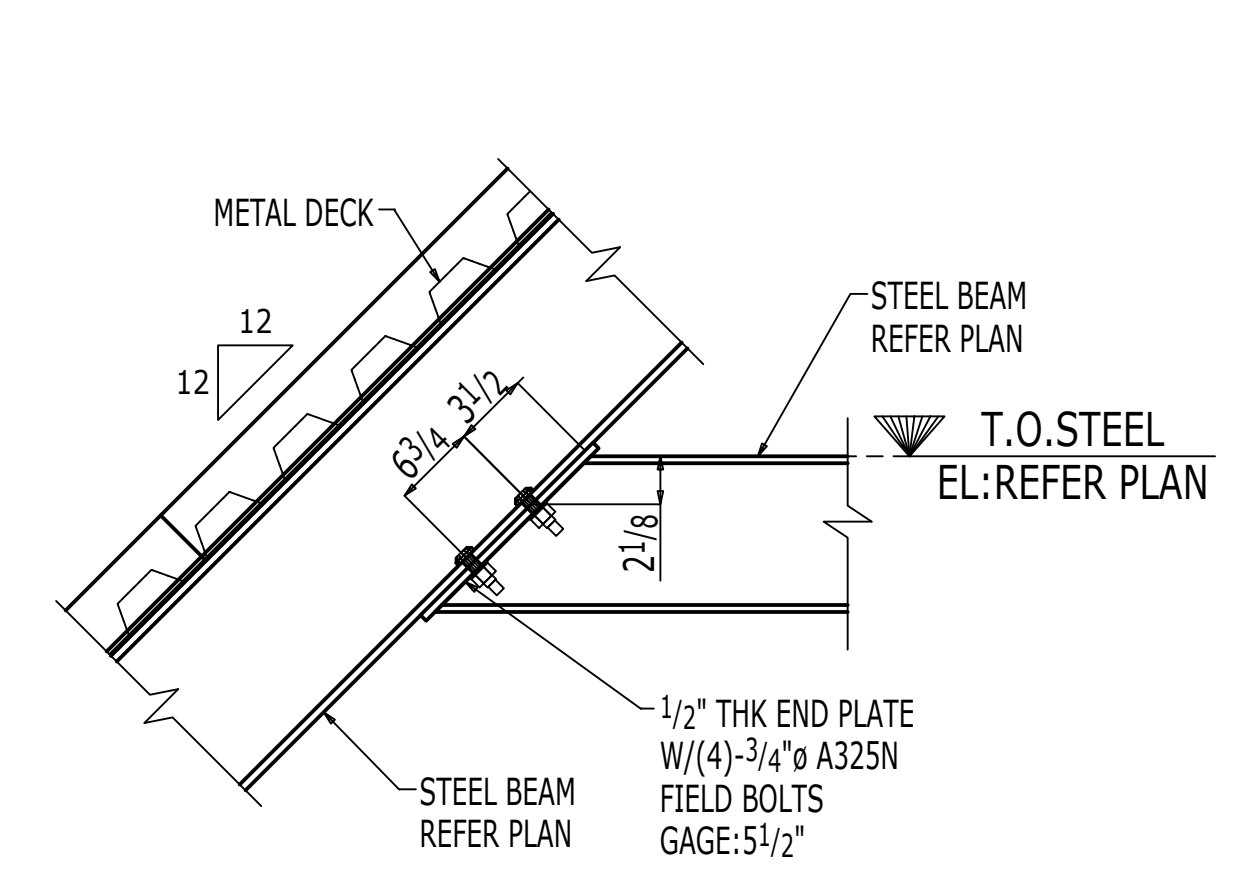


06 SECTION VIEW
E1009 (REF.DWG:D/S407)

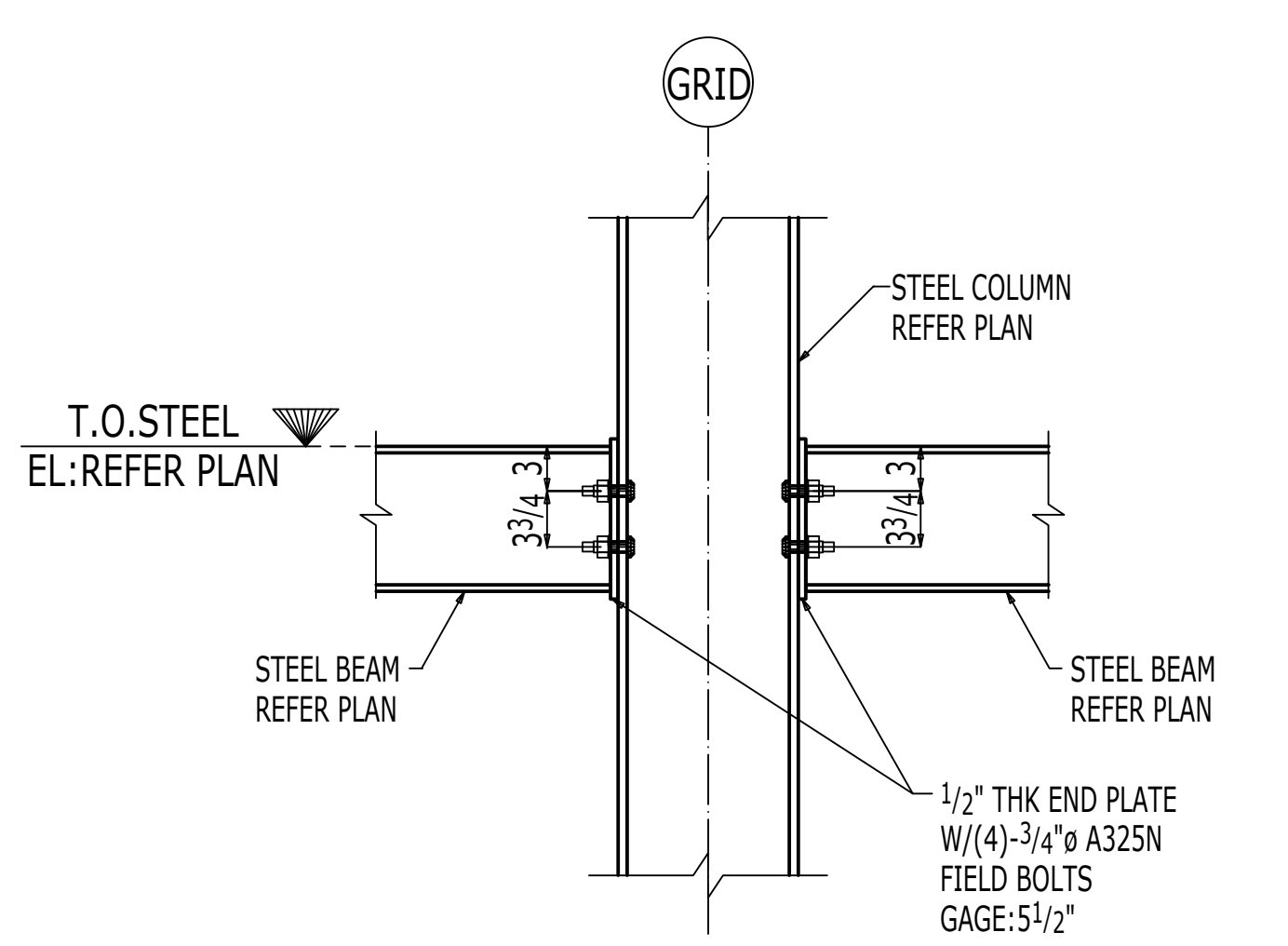
NOTE:
FOR DTI WASHER INSTALLATION DETAILS REFER 02/E1011.



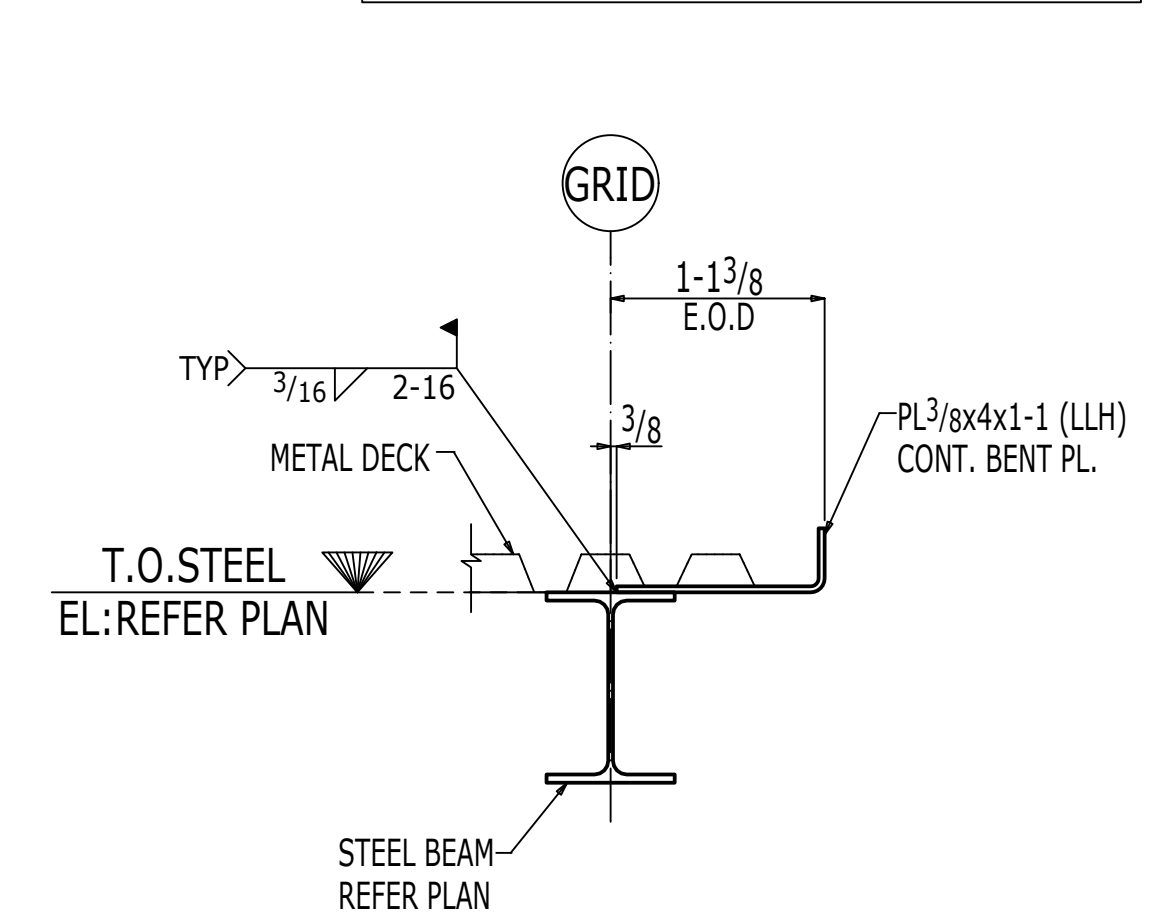
07 SECTION VIEW
E1009 (REF.DWG:N/S401)



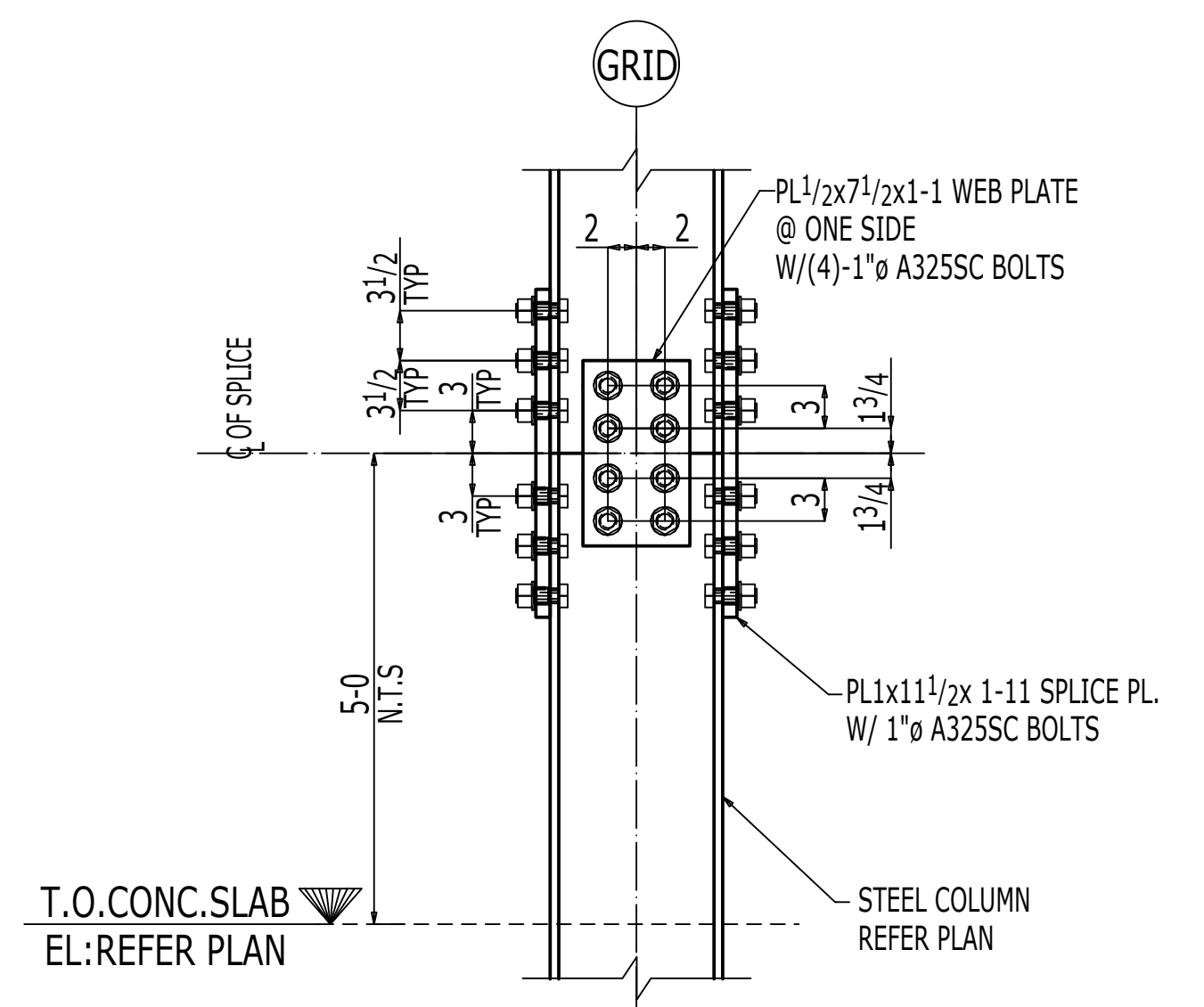
08 SECTION VIEW
E1009 (REF.DWG:N/S401)



09 SECTION VIEW
E1009 (REF.DWG:N/S401)



10 SECTION VIEW
E1009 (REF.DWG:F/A407)



TYPICAL COLUMN SPLICE CONNECTION

ISSUE/REVISIONS			
REV	BY	DATE	DESCRIPTION

FIELD CONNECTION NOTES: BOLTS: 3/4" DIA A325N-TC BOLTS UNO WELDING: AWS E70XX		STRUCTURE:	
BOLTS: 3/4" DIA A325N-TC BOLTS UNO WELDING: AWS E70XX		LOCATION:	
BOLTS: 3/4" DIA A325N-TC BOLTS UNO WELDING: AWS E70XX		ARCHITECT:	
BOLTS: 3/4" DIA A325N-TC BOLTS UNO WELDING: AWS E70XX		ENGINEER:	
BOLTS: 3/4" DIA A325N-TC BOLTS UNO WELDING: AWS E70XX		CUSTOMER:	
DRAFTER:	SHOP ORDER	SHEET NO.	REV
REF:	CHECKER:		