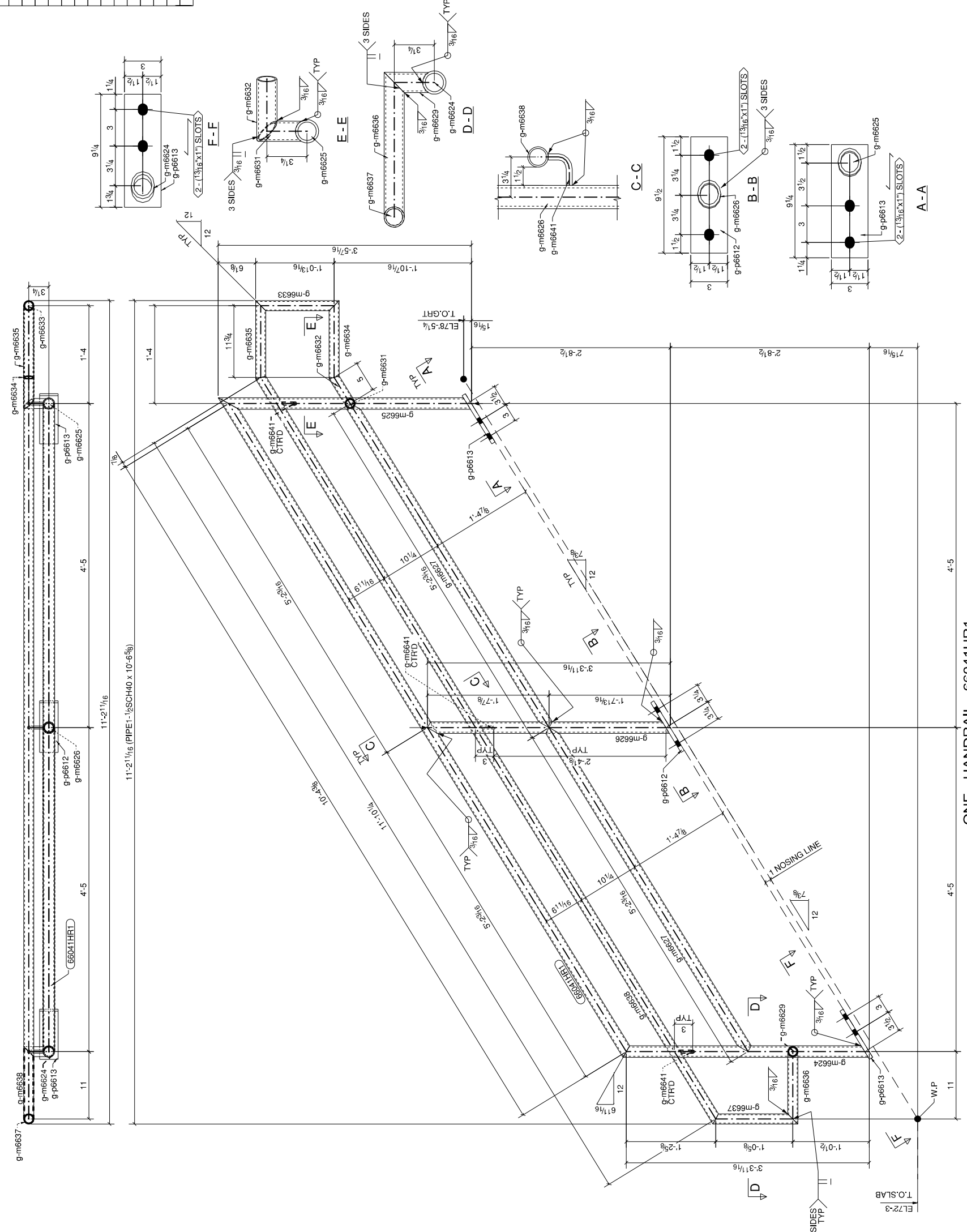


**BILL OF MATERIAL**

SEQ NO	SEQ QTY	SHIP MARK	TOTAL QTY	DESCRIPTION	FT. IN.	ASSEM. MARK	ABM	REMARKS
66	1	66041HR1	1	PIPE1-1/2SCH40	10'-6.58"			
			1	PIPE1-1/2SCH80	3'-4.116"	g-m6624		AS-GRB
			1	PIPE1-1/2SCH80	3'-5.14"	g-m6625		AS-GRB
			1	PIPE1-1/2SCH80	3'-3.12"	g-m6626		AS-GRB
			2	PIPE1-1/2SCH40	5'-2.18"	g-m6627		AS-GRB
			1	PIPE1-1/4SCH40	0'-3.58"	g-m6629		AS-GRB
			1	PIPE1-1/4SCH40	0'-3.58"	g-m6631		AS-GRB
			1	PIPE1-1/4SCH40	0'-6.116"	g-m6632		AS-GRB
			1	PIPE1-1/4SCH40	1'-1.1116"	g-m6633		AS-GRB
			1	PIPE1-1/4SCH40	1'-0.1316"	g-m6634		AS-GRB
			1	PIPE1-1/4SCH40	1'-0.1316"	g-m6635		AS-GRB
			1	PIPE1-1/4SCH40	1'-0.1116"	g-m6636		AS-GRB
			1	PIPE1-1/4SCH40	1'-1.1516"	g-m6637		AS-GRB
			1	PIPE1-1/4SCH40	1'-10.1516"	g-m6638		AS-GRB
			3	RH1Z	0'-4.116"	g-m6641		ASB
			1	PL5.8X3"	0'-9.12"	g-p6612		ASB
			2	PL5.8X3"	0'-9.14"	g-p6613		ASB
			6	FIELD BOLT				
			6	3/4" X 3.5" X 1/2" BOLT	2'-12"			



**ONE - HANDRAIL - 66041HR1**  
REF DWG NO. - 66E1.68E2