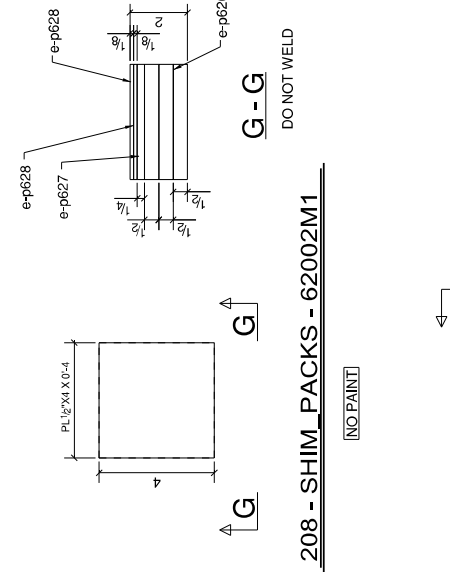
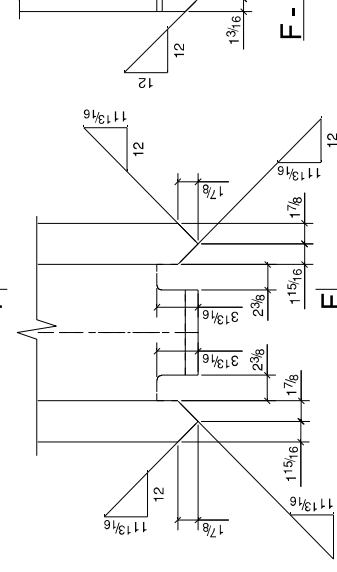
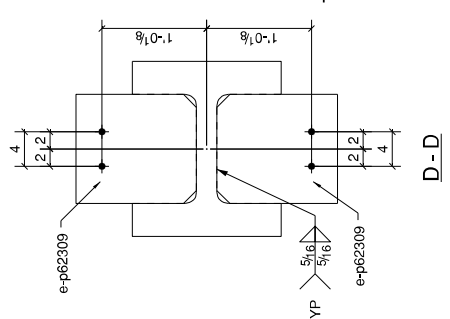


BILL OF MATERIAL

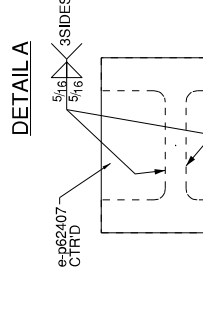
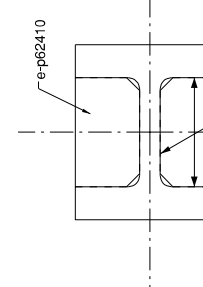
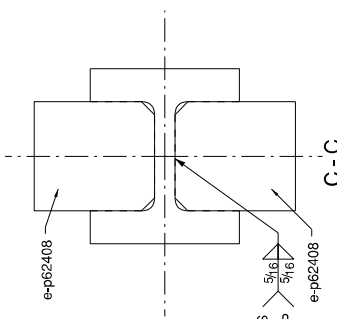
SEQ	SEQ	SHIP	TOTAL	LENGTH	ASSEM.	ABM	REMARKS
NO	QTY	MARK	QTY	FT. IN.	MARK		
62C	1	62002C1	1	40'-3 7/16"	A592	203-4	A572GR50
			1	4'-5"	e-p62191		
			2	1'-1 15/16"	e-p62309		
			1	1'-8 1/4"	e-p62407		
			2	1'-1 15/16"	e-p62408		
			2	1'-1 15/16"	e-p62409		
			4	1'-0 5/8"	e-p62410		
			2	1'-2 1/2"	e-p62411		
			4	2 1/4"	FIELD BOLT		
			4	3/4" x 0.325" BOLT			
62	208	62002M1	208	PL 1/2" x 4"	A36		
			416	PL 1/2" x 4"	A36		
			208	PL 1/4" x 4"	A36		
			416	PL 1/8" x 4"	A36		
62	1000	62002M2	1000	PL 1/2" x 4"	A36		
			1000	PL 1/4" x 4"	A36		
			2000	PL 1/8" x 4"	A36		



208 - SHIM PACKS - 62002M1
(NO PAINT)

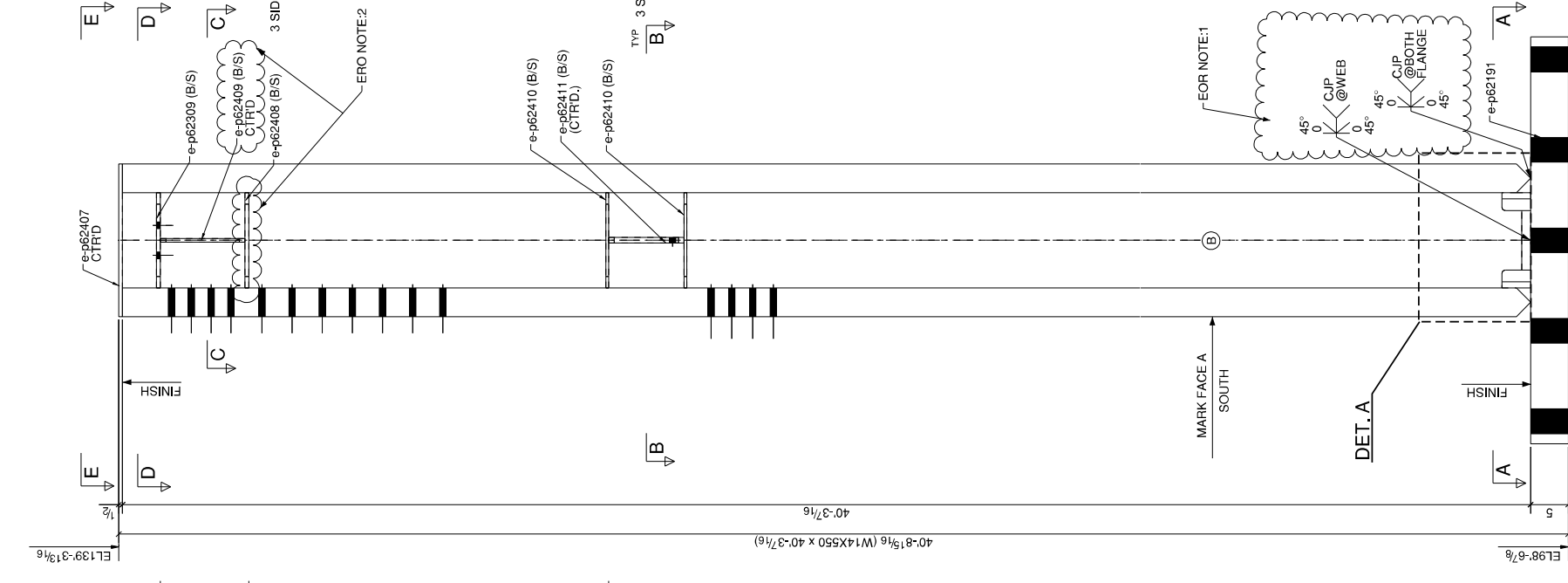


1000 - SHIM PACKS - 62002M2
(NO PAINT)



FOR NOTE:1
PLEASE VERIFY AND CONFIRM THAT THE COLUMN FLANGE THICKNESS IS EXCEED 2". HENCE WE HAVE PROVIDED THE DOUBLE CJP WELD AS SHOWN.

FOR NOTE:2
JOIST SUPPORTING, VERTICAL PLATE DEPTH IS INCREASED BY APPROX 3 1/2" TO AVOID THE TRUSS BOLT CLASHING WITH BOTTOM PLATE. PLEASE CONFIRM THIS IS IT ACCEPTABLE.



ONE - COLUMN - 62002C1

REF DWG NO: 62E15
 1 20.10.23.38
 2 19.10.23.38
 3 19.10.23.38